



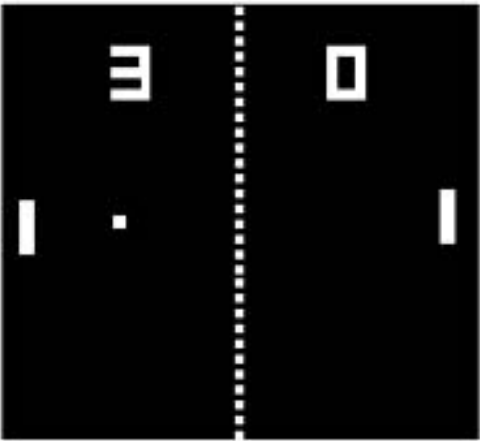
Past, Present and Future

# The Distant Past

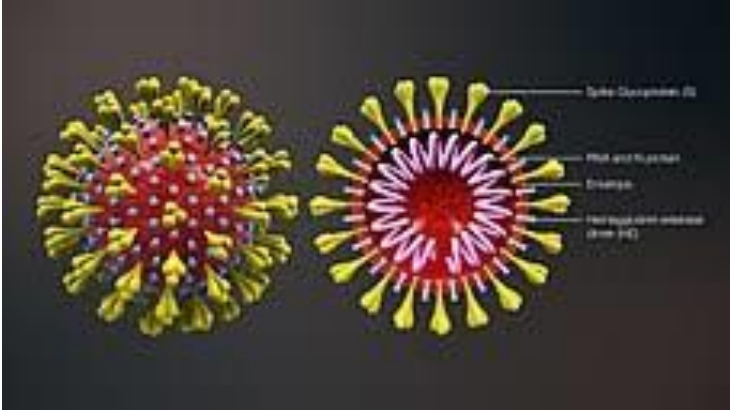
In 1750, i.e. in the whole of human time to that point, there were 1 billion people on earth and 3% of them lived in cities.



# The Recent Past



# The Present



# The Future

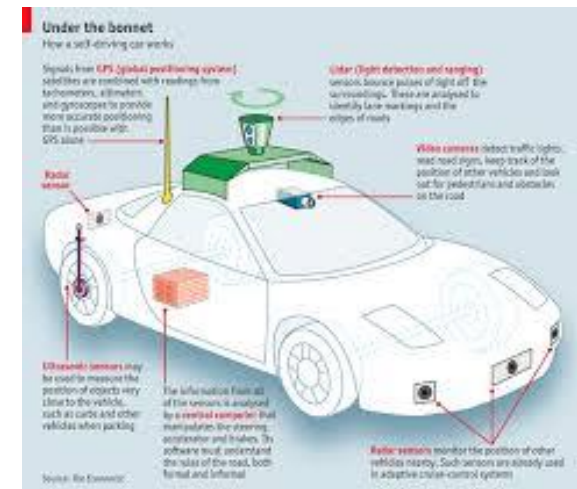
In 2050, there will be 9 billion people and 60% will live in cities.



# The Future

What was a taxi driver?

What was a driving test?



What was a truck driver?



What was a delivery driver?



# The Future



The factory of the future will be run by a man and a dog.

The man's job will be to feed the dog.



The dog's job will be to stop the man from touching anything.



